



MAXAM

MINING TIRE CATALOG



TABLE OF CONTENTS:

LARGE MINING TIRES		pg#:
MS401	E4	4
MS401+	E4	5
MS402	E4	6
MS403	E4	7
MS403PRO	E4	8
MS403+	E4	9
MS412	E4	10
MS440	E4	11
MS453	E4	12
SUPPORT TIRES		pg#:
MS202	E2/G2/L2	14
MS301	E3/L3	14
MS302	E3/L3	14
MS305	E3	15
MS306	E3	15
MS306+	E3	15
MS405	DUMPXTRA E4/L4	16
MS406	E4/L4	16
MS409	E4	16
MS501	MINEXTRA - L5	17
MS502	MINEXTRA - L5S	17
MS503	L5T	17
MS906	SKID STEER	18
MS907	SKID STEER	18
MS706	CONSTRUCTION PRO	18
MS904	BACKHOE - INDUSTRIAL SERVICE	19
MS801	INDUSTRIAL PNEUMATICS	19



MINING TIRE CATALOG



MAXAM MS401

E4

Deep grooved tread design provides excellent traction in rigid dump truck applications. Ideal for applications requiring maximum road grip and high site TKPH/TMPH.

- Excellent traction in all off road conditions
- Deep tread grooves provide cooler running tread for high site TKPH/TMPH
- Wide, square footprint distributes load for minimal haul road disturbance
- Reinforced bead, shoulder and sidewall for increased cut resistance
- Heat resistant undertread reduces tire temperature
- Multiple tread compound options target specific site requirements

Applications:



Size	Rating	Type	Rim	O.D.	S.W.	T.D.	Tread Compound	TMPH/ TKPH	Infl. P.	L.C.C.	L.I.
				in mm	in mm	32nds mm				(lbs/kg)	
12.00R24	★★★	TT / TL	8.50V	49.3	12.0	40	Standard	---		130	160F
				1251	305	32				9900	
14.00R24	★★★	TT	10.00W	55.1	15.6	45	Standard	82/120	109	12800	169B
				1400	395	36	Cut Resistant	62/91	750	5800	
14.00R25	★★★	TT / TL	10.00/1.5	55.1	15.6	45	Standard	82/120	109	12800	169B
				1400	395	36	Cut Resistant	62/91	750	5800	
18.00R25	★★	TL	13.00/2.5	65.7	20.3	62	Standard	---	102	20400	185B
				1669	515	49	Cut Resistant		700	9250	
18.00R33	★★	TL	13.00/2.5	73.6	20.3	66	Standard	146/213	102	24000	191B
				1876	516	52	Cut Resistant	118/173	700	10900	
21.00R33	★★	TL	15.00/3.0	78.0	21.8	77	Standard	187/273			102
				1982	554	61	Cut Resistant	151/221	700	14000	
21.00R35	★★	TL	15.00/3.0	80.7	23.2	74	Standard	187/273			102
				2050	590	58	Cut Resistant	151/221	700	14500	
24.00R35	★★	TL	17.00/3.5	85.4	26.2	83	Standard	247/361			102
				2170	666	65	Cut Resistant	200/292	700	18500	
27.00R49	★★	TL	19.50/4.0	106.7	28.9	88	Standard	319/465			102
				2710	734	71	Ultra Cut Resistant	257/375	700	27250	
							Cut Resistant	---			
							Heat Resistant	429/627			





MAXAM

MS401+

E4

Deep grooved tread design provides excellent traction in rigid dump truck applications. Ideal for applications requiring maximum road grip and high site TKPH/TMPH.

- Excellent traction in all off road conditions
- Deep tread grooves provide cooler running tread for high site TKPH/TMPH
- Wide, square footprint distributes load for minimal haul road disturbance
- Reinforced bead, shoulder and sidewall for increased cut resistance
- Heat resistant undertread reduces tire temperature
- Multiple tread compound options target specific site requirements

Applications:



Size	Rating	Type	Rim	O.D.	S.W.	T.D.	Tread Compound	TMPH/ TKPH	Infl. P.	L.C.C. (lbs/kg)	L.I.
				in mm	in mm	32nds mm			psi KPa	30 mph 50 kph	
27.00R49	★★	TL	19.50/4.0	107.0	28.9	81.0	Standard	343/500	102	60000	223B
							Ultra Cut Resistant	240/350			
				2719	734	102	Cut Resistant	298/435	700	27250	
							Heat Resistant	398/580			





MAXAM

MS402

E4

Deep grooved shoulder lugs and solid center bar provides exceptional traction and maximum tread life in rigid dump truck applications.

- Excellent traction on maintained haul roads
- Solid tread centerline minimizes vibration and increases tread life
- Wide, square footprint distributes load to minimize haul road disturbance
- Reinforced bead, shoulder and sidewall for increased cut resistance
- Heat resistant undertread reduces tire temperature
- Multiple tread compound options target specific site requirements

Applications:



Size	Rating	Type	Rim	O.D.	S.W.	T.D.	Tread Compound	TMPH/ TKPH	Infl. P.	L.C.C. (lbs/kg)	L.I.
				in mm	in mm	32nds mm			psi KPa	30 mph 50 kph	
18.00R33	★★	TL	13.00/2.5	73.8	20.1	66	Standard	145/212	102	24000	191B
				1874	511	52	Cut Resistant	116/169	700	10900	
24.00R35	★★	TL	17.00/3.5	86.5	27.8	71	Standard	226/330	102	40800	209B
				2196	705	56	Cut Resistant	182/265	700	18500	
27.00R49	★★	TL	19.50/4.0	106.4	29.0	82	Standard	291/425		102	60000
				2702	737	65	Ultra Cut Resistant	233/340	---	---	
							Cut Resistant	---	700	27250	
30.00R51	★★	TL	22.00/4.5	114.4	33.7	93	Standard	393/574	102	74000	230B
				2906	856	74	Ultra Cut Resistant	271/395	---	---	
							Cut Resistant	322/470	700	33500	
							Heat Resistant	460/671			





MAXAM MS403

E4

A versatile tread design allows flexibility in applications from smooth haul roads to rough and rocky terrain while providing maximum productivity.

- Excellent traction in all haul road conditions
- Deep tread grooves provide cooler running tread for high site TKPH/TMPH
- E4+ deep tread for longest tire life
- Wide, square footprint distributes load for minimal haul road disturbance
- Reinforced bead, shoulder and sidewall for increased cut resistance
- Heat resistant undertread reduces tire temperature
- Multiple tread compound options target specific site requirements

Applications:



Size	Rating	Type	Rim	O.D.	S.W.	T.D.	Tread Compound	TMPH/ TKPH	Infl. P.	L.C.C. (lbs/kg)	L.I.
				in mm	in mm	32nds mm			psi KPa	30 mph 50 kph	
27.00R49	★★	TL	19.50/4.0	106.6	29.0	94	Standard	346/505	102	60000	223B
				2708	737	75	Ultra Cut Resistant	232/338			
							Cut Resistant	281/410	700	27250	
							Heat Resistant	404/590			
33.00R51	★★	TL	24.00/5.0	120.5	35.2	105	Standard	408/595	102	85500	235B
				3061	894	84	Ultra Cut Resistant	272/397			
							Cut Resistant	324/473	700	38750	
							Heat Resistant	549/802			
36.00R51	★★	TL	26.00/5.0	127.3	38.9	117	Standard	493/720	102	102000	241B
				3233	988	93	Cut Resistant	418/610			
							Heat Resistant	569/830			
40.00R57	★★	TL	29.00/6.0	141.5	43.2	117	Standard	599/875	102	132500	250B
				3594	1097	93	Cut Resistant	500/730			
							Heat Resistant	714/1042	700	60000	
50/80R57	★★	TL	32.00/6.0	141.5	48.4	120	Standard	622/908			116
				3593	1230	95	Cut Resistant	529/772			
							Heat Resistant	728/1062	800	73000	
59/80R63	★★	TL	44.00/5.0	158.1	57.8	146	Standard	881/1285			102
			41.00/5.0	4017	1468	116	Cut Resistant	713/1040			
						Heat Resistant	1032/1505	700	100000		





MAXAM

MS403 PRO

E4

A versatile tread design allows flexibility in applications from smooth haul roads to rough and rocky terrain while providing maximum productivity.

- Excellent traction in all haul road conditions
- Deep tread grooves provide cooler running tread for high site TKPH/TMPH
- E4+ deep tread for longest tire life
- Wide, square footprint distributes load for minimal haul road disturbance
- Reinforced bead, shoulder and sidewall for increased cut resistance
- Heat resistant undertread reduces tire temperature
- Multiple tread compound options target specific site requirements

Applications:



Size	Rating	Type	Rim	O.D.	S.W.	T.D.	Tread Compound	TKPH	Infl. P.	L.C.C.	L.I.
				in mm	in mm	32nds mm				(lbs/kg)	
33.00R51	★★	TL	24.00/5.0	120.5	36.4	106	Cut resistant	595	102	85500	235B
				3061	925	84				700	
33.00R51	★★	TL	24.00/5.0	120.5	36.4	106	Standard	700	102	85500	235B
				3061	925	84				700	
33.00R51	★★	TL	24.00/5.0	120.5	36.4	106	Heat Resistant	802	102 (108)*	85500 (90940)*	235B (237B)*
				3061	925	84				700 (750)*	

* If you operate with 237B and high loading capacity, please consult your MAXAM representative.





MAXAM MS403+

E4

A versatile tread design allows flexibility in applications from smooth haul roads to rough and rocky terrain while providing maximum productivity.

- Excellent traction in all haul road conditions
- Deep tread grooves provide cooler running tread for high site TKPH/TMPH
- E4+ deep tread for longest tire life
- Wide, square footprint distributes load for minimal haul road disturbance
- Reinforced bead, shoulder and sidewall for increased cut resistance
- Heat resistant undertread reduces tire temperature
- Multiple tread compound options target specific site requirements

Applications:



Size	Rating	Type	Rim	O.D.	S.W.	T.D.	Tread Compound	TMPH	TKPH	Infl. P.	L.C.C.	L.I.
				in mm	in mm	32nds mm					(lbs/kg) 30 mph 50 kph	
33.00R51	★★	TL	24.00/5.0	120.5	36.4	109.6	Cut Resistant	390	570	102	85500	235B
				3061	925	87	Standard	466	680	700	38750	
							Heat Resistant	534	780			





MAXAM

MS412

E4

A versatile tread design allows flexibility in applications from smooth haul roads to rough and rocky terrain while providing maximum productivity.

- Excellent traction in all haul road conditions
- Deep tread grooves provide cooler running tread for high site TKPH/TMPH

Applications:



Size	Rating	Type	Rim	O.D.	S.W.	T.D.	Tread Compound	TMPH/ TKPH	Infl. P.	L.C.C. (lbs/kg)	L.I.
				in mm	in mm	32nds mm			psi KPa	30 mph 50 kph	
27.00R49	★★	TL	19.50/4.0	106.4	29.0	82	Standard	-	102	60000	223B
							Ultra Cut Resistant	-			
				2703	737	65	Cut Resistant	-	700	27250	
							Heat Resistant	-			





MAXAM MS440

E4

A versatile tread design allows flexibility in applications from smooth haul roads to rough and rocky terrain while providing maximum productivity.

- Excellent traction in all haul road conditions
- Deep tread grooves provide cooler running tread for high site TKPH/TMPH
- E4+ deep tread for longest tire life
- Wide, square footprint distributes load to minimize haul road disturbance
- Reinforced bead, shoulder and sidewall for increased cut resistance
- Heat resistant undertread reduces tire temperature
- Multiple tread compound options target specific site requirements

Applications:



Size	Rating	Type	Rim	O.D.	S.W.	T.D.	Tread Compound	TMPH/ TKPH	Infl. P.	L.C.C. (lbs/kg)	L.I.
				in mm	in mm	32nds mm			psi KPa	30 mph 50 kph	
37.00R57	★★	TL	27.00/6.0	135.4	40.0	117	Standard	551/805	102	113500	245B
				3439	1016	93	Cut Resistant	452/660	700	51500	
							Heat Resistant	665/971			
46/90R57	★★	TL	32.00/6.0	141.5	46.0	117	Standard	603/880	102	139000	252B
				3594	1168	93	Cut Resistant	507/740	700	63000	
							Heat Resistant	712/1040			





MAXAM

MS453

E4

A rugged and aggressive tread design that allows maximum tire life for the most demanding mining application.

- New reinforced sidewall, robust bead construction and enhanced tread belts to provide maximum protection and performance
- Highly engineered tread pattern designed to provide maximum resistance to severe conditions
- Deep tread depth delivers longer tire life and lower cost-per-hour
- Heat resistant undertread reduces tire temperature, increasing the tire's TKPH/TMPH
- Multiple tread compound options target specific site requirements

Applications:



Size	Rating	Type	Rim	O.D.	S.W.	T.D.	Tread Compound	TMPH/ TKPH	Infl. P.	L.C.C. (lbs/kg)	L.I.
				in mm	in mm	32nds mm			psi KPa	30 mph 50 kph	
53/80R63	★★	TL	36.00/5.0	150.7	51.3	138	Standard	683/997	102	182000	261B
				3828	1303	110	Cut Resistant	578/844	700	82500	
							Heat Resistant	836/1220			





MAXAM



MAXAM

MINING SUPPORT TIRES



MS202

E2/G2/L2

For loaders, graders, telehandlers and articulated dump trucks operating in soft underfoot conditions. Ideal for use in dirt, mud, snow and ice.

- Siped block pattern for maximum traction
- Wear and cut-resistant tread compound
- Self-cleaning tread with stone ejectors
- Approved for use in M+S (Mud and Snow) conditions

Applications:



MS301

E3/L3

Standard E3/L3 rock lug pattern combines excellent traction and high resistance to wear and cutting.

- Excellent traction in all off-road conditions
- Thick undertread for improved puncture resistance
- High quality casing allows for excellent retreadability
- Wear and cut resistant tread compound
- Wide, flat footprint profile for maximum stability and wear
- Increased net-to-gross for improved tread life

Applications:



MS302

E3/L3

Heavy duty E3/L3+ lug pattern combines excellent traction and high resistance to wear and cutting. Specifically designed to minimize vibration at haul speeds and provide the lowest cost-per-hour.

- Excellent traction in all off-road conditions
- Thick undertread for improved puncture resistance
- High quality casing allows for excellent retreadability
- Wear and cut resistant tread compound
- Wide, flat footprint profile for maximum stability and wear
- Increased net-to-gross and tread depth for highest tread life
- Offset, reinforced lugs minimize vibration at haul speeds

Applications:





MS305

E3

A high traction E3 pattern for use in dump truck applications.

- Excellent traction in all off-road conditions
- Deep undertread for improved puncture resistance
- Reinforced all-steel radial casing provides superior loading performance
- Wear and cut resistant tread compound
- Wide, flat footprint profile for maximum stability and wear

Applications:



MS306

E3

A high traction E3 pattern for use in dump truck applications.

- Excellent traction in all off-road conditions
- Deep undertread for improved puncture resistance
- Reinforced all-steel radial casing provides superior loading performance
- Wear and cut resistant tread compound
- Wide, flat footprint profile for maximum stability and wear

Applications:



MS306+

E3

A high traction E3 pattern for use in dump truck applications.

- Increased tread depth allows for longer tread life
- Excellent traction in all off-road conditions
- Deep undertread for improved puncture resistance
- Reinforced all-steel radial casing provides superior loading performance
- Wear and cut resistant tread compound
- Wide, flat footprint profile for maximum stability and wear

Applications:





MS405

DUMPXTRA E4/L4

Deep E4/L4 lug pattern combines excellent traction and high resistance to wear and cutting. Specifically designed to minimize vibration at haul speeds and provide the lowest cost-per-hour.

- Excellent traction in all off-road conditions
- Deep undertread for improved puncture resistance
- High quality casing allows for excellent retreadability
- Wear and cut resistant tread compound
- Wide, flat footprint profile for maximum stability and wear

Applications:



MS406

E4/L4

Deep E4/L4 lug pattern combines excellent traction and high resistance to wear and cutting. Specifically designed to maximize traction in loader applications and provide the lowest cost-per-hour.

- Excellent traction in all off-road conditions
- Deep undertread for improved puncture resistance
- High quality casing allows for excellent retreadability
- Wear and cut resistant tread compound
- Wide, flat footprint profile for maximum stability and wear

Applications:



MS409

E4

A high traction E4 pattern for use in dump truck applications.

- Deep tread depth allows for longer tread life
- Excellent traction in all off-road conditions
- Deep undertread for improved puncture resistance
- Reinforced all-steel radial casing provides superior loading performance
- Wear and cut resistant tread compound
- Wide, flat footprint profile for maximum stability and wear

Applications:





MS501 MINEXTRA - L5

For use in the most severe applications where traction and long tread life are required.

- Specialized mining compound for increased cut and impact resistance
- Extra deep L5 offset lug pattern combines excellent traction and high resistance to wear in all off-road conditions
- Deep undertread for improved puncture resistance
- Reinforced bead, shoulder and sidewall for increased cut resistance

Applications:



MS502 MINEXTRA - L5S

For equipment operating in highly abrasive material environments where maximum protection from penetration and cuts is needed.

- Extra deep L5S design provides highest resistance to wear and cutting, improving tire life and lowering operating cost
- Deep undertread for improved puncture resistance
- Reinforced bead, shoulder and sidewall for increased cut resistance
- Specialized mining compound for increased cut and impact resistance

Applications:



MS503 L5T

Extra deep, open lug L5T traction pattern combines excellent traction and high resistance to wear and cutting. Specifically designed to maximize service life in the harshest applications.

- Excellent traction in all off-road conditions
- Staggered tread blocks provide continuous ground contact for improved ride comfort
- Reinforced bead, shoulder and sidewall construction
- Square shoulder design and wide footprint maximizes stability
- Stone and mud ejectors prevent debris buildup between lugs

Applications:





MS906

SKID STEER

Deep R4 tread pattern designed for skid steer, backhoe and telehandler applications.

- Full, flat profile with self-cleaning stepped tread improves performance
- Center tie bar reduces vibration during over-the-road driving
- Deep undertread for improved puncture resistance
- Special cut resistant compound improves wear and reduces tread chunking

Applications:



MS907

SKID STEER

Extra deep, aggressive L5 tread pattern designed for skid steer, backhoe and telehandler applications.

- Full, flat profile with self-cleaning stepped tread improves performance
- Center tie bar reduces vibration during over-the-road driving
- Deep undertread for improved puncture resistance
- Special cut resistant compound improves wear and reduces tread chunking
- Increased net-to-gross for maximum tread life and lowest cost per hour

Applications:



MS706

CONSTRUCTION PRO

Premium 3-stage solid tire ideal for the most extreme OTR and construction applications. Extra deep tread allows for 3 to 5 times longer tire life vs pneumatic. 3-stage, 100% rubber construction:

- Ultra cut, wear and heat resistant tread compound
- Pure rubber base compound (cushion center)
- Internal steel ring reinforcement eliminates wheel slip
- Solid centerline provides smoother running on hard surfaces and better chunk resistance on rough ground

Applications:





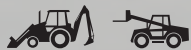
MS904

BACKHOE INDUSTRIAL SERVICE

Modified R4 tread pattern for applications combining high off-road traction and excellent roading performance

- Tread design optimized with self-cleaning mud breakers
- Center tie bar reduces vibration during over the road driving
- Deep undertread for improved puncture resistance
- Wear and cut resistant compound
- Increased net-to-gross for long tread life

Applications:



MS801

INDUSTRIAL PNEUMATICS

Designed for use in multiple applications, the MS801 offers excellent traction and protection from punctures, as well as, improved stability.

- Extra wide profile and reinforced sidewall for improved stability
- Thick undertread for maximum puncture resistance
- Self-cleaning industrial tread design provides excellent traction
- Cut and wear resistant compound

Applications:



LOAD AND INFLATION PRESSURE CHARTS

MS401 E4, MS402 E4, MS403 E4

Off-The-Road haulage service - conventional radial tires. Maximum speed 30mph (50km/h) - speed symbol B

Size	Tire Load Limits at Various Cold Inflation Pressures												
	psi	69	73	76	80	83	87	91	94	98	102	109	116
kPa		475	500	525	550	575	600	625	650	675	700	750	800
14.00R24	***	9100 (*)	9650	9900	10200	10500	11000	11400	11700	12000	12300 (**)	12800 (***)	12800 (***)
		4125 (*)	4375	4500	4625	4750	5000	5150	5300	5450	5600 (**)	5800 (***)	5800 (***)
14.00R25	***	9100 (*)	9650	9900	10200	10500	11000	11400	11700	12000	12300 (**)	12800 (***)	12800 (***)
		4125 (*)	4375	4500	4625	4750	5000	5150	5300	5450	5600 (**)	5800 (***)	5800 (***)
18.00R33	**	17600 (*)	18700	19300	19800	20400	21500	22000	22700	23400	24000 (**)	-	-
		8000 (*)	8500	8750	9000	9250	9750	10000	10300	10600	10900 (**)	-	-
21.00R33	**	22700 (*)	24000	24700	25400	26000	27600	28300	29100	30000	30900 (**)	-	-
		10300 (*)	10900	11200	11500	11800	12500	12850	13200	13600	14000 (**)	-	-
21.00R35	**	23400 (*)	24700	25400	26000	27600	28300	29100	30000	30900	32000 (**)	-	-
		10600 (*)	11200	11500	11800	12500	12850	13200	13600	14000	14500 (**)	-	-
24.00R35	**	30000 (*)	30900	32000	34200	35300	36400	37500	38600	39700	40800 (**)	-	-
		13600 (*)	14000	14500	15500	16000	16500	17000	17500	18000	18500 (**)	-	-
27.00R49	**	44100 (*)	45400	48100	49400	50700	52000	55100	56800	58400	60000 (**)	-	-
		20000 (*)	20600	21800	22400	23000	23600	25000	25750	26500	27250 (**)	-	-
33.00R51	**	64000 (*)	66000	68000	71500	74000	76000	78500	80500	82500	85500 (**)	-	-
		29000 (*)	30000	30750	32500	33500	34500	35500	36500	37500	38750 (**)	-	-
36.00R51	**	78500 (*)	80500	82500	85500	88000	91000	93500	96500	99000	102000 (**)	-	-
		35500 (*)	36500	37500	38750	40000	41250	42500	43750	45000	46250 (**)	-	-
37.00R57	**	85500 (*)	88000	91000	96500	99000	102000	104500	107500	110000	113500 (**)	-	-
		38750 (*)	40000	41250	43750	45000	46250	47500	48750	50000	51500 (**)	-	-
40.00R57	**	9900 (*)	102000	107500	110000	113500	117000	120000	123500	128000	132500 (**)	-	-
		4500 (*)	46250	48750	50000	51500	53000	54500	56000	58000	60000 (**)	-	-
46/90R57	**	-	-	-	117000	120000	123500	128000	132500	135500	139000 (**)	-	-
		-	-	-	53000	54500	56000	58000	60000	61500	63000 (**)	-	-
50/80R57	**	-	-	-	120000	123500	128000	132500	135500	139000	143500 (**)	152000	161000 (**)
		-	-	-	54500	56000	58000	60000	61500	63000	65000 (**)	69000	73000 (**)
53/80R63	**	-	-	-	152000	156500	165500	171000	176500	176500	182000 (**)	-	-
		-	-	-	69000	71000	75000	77500	80000	80000	82500 (**)	-	-

MAXAM OTR TIRE LIMITED WARRANTY

LIMITED WARRANTY

The following warranty contains certain rights and obligations that pertain to MAXAM branded Off-The-Road (OTR), Industrial, Construction, Bias Agricultural, large Mining tires and Forestry tires. Please review these rights and obligations carefully.

DEFINITION

This Limited Warranty covers all MAXAM branded Off-The-Road (OTR), Industrial, Construction, large Mining tires, Bias Agricultural and Forestry tires as designated in MAXAM OTR and AG product listings (price books, catalogs and leaflets). This does not apply to used, DA, or "NA" (not adjustable) tires.

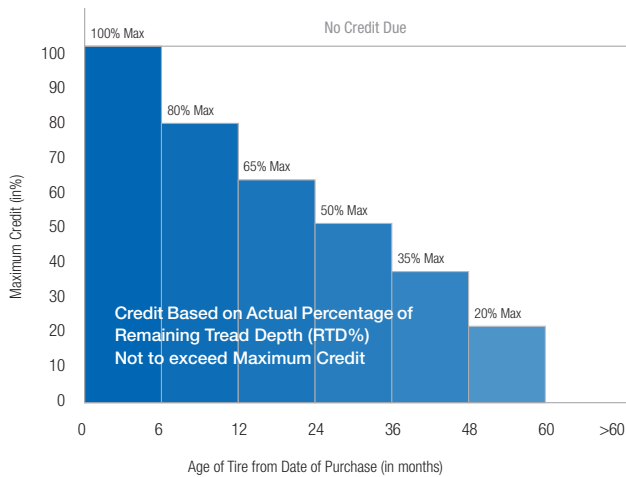
ELIGIBILITY

Every tire bearing the name MAXAM and with a complete serial number moulded in the sidewall is warranted to be free from manufacturing defects within the manufacturer's control. If an examination by an authorized MAXAM representative shows that any such tire failed as a result of manufacturing defects, it will, at the option of MAXAM, either be repaired at no charge, or a credit will be issued toward the purchase price of a replacement tire, being a comparable MAXAM OTR product. This credit will be determined by applying the lesser of the percentage of remaining tread depth (RTD%) and the maximum age based credit shown in the following chart. The replacement percentage will be multiplied by the original purchase price of the tire (excluding any taxes or duties) to determine the amount of credit to be applied. Customer is responsible for the disposal of all adjusted tires. This warranty coverage is for tires used within published designed specifications for MAXAM tires. To be eligible for warranty, the tire must have at least 5/32nds (4mm) of remaining tread. The customer will make any claimed tire available for inspection or will coordinate with MAXAM for return shipment to MAXAM upon request. If return shipment is requested, MAXAM will bear all shipping costs and provide Return Goods Authorization and arrange pickup. Any use outside such specifications automatically voids this warranty. Please consult MAXAM technical leaflets, etc. for design specifications.

TIME PERIOD

This warranty applies for a maximum period of five years (60 months) from date of tire purchase. If no invoice or documentation of the tire purchase can be provided, the date of tire manufacture will be used. The date of manufacture can be determined by the first six digits in the serial number code.

AMOUNT OF CREDIT TO CUSTOMER FOR MANUFACTURING DEFECTS



LIMITATIONS

This Limited Warranty is applicable to the original purchaser and is not assignable to subsequent purchasers. No MAXAM dealer, agent or representative has the authority to make or imply any representation, promise or agreement which in any way varies or extends the terms of this warranty. Any tire, no matter how well manufactured, may fail in service or become unserviceable due to conditions beyond the control of the manufacturer. This Limited Warranty is under no circumstances a representation that a tire failure cannot occur. This Limited Warranty gives you specific rights and you may also have other rights which may vary from jurisdiction to jurisdiction. To the extent that the provisions of any applicable legislation expressly replace, eliminate, amend or prohibit any term or terms contained herein, such term or terms shall be accordingly replaced, eliminated, amended or extended, as the case may be, in accordance with such legislation.

LIMITED WARRANTY EXCLUSIONS ALL OTR TIRES AND TUBES

All OTR/AG warranties are subject to the following exclusions:

1. Tire claims submitted more than 60 months from the date of purchase.
2. Tires for which alternative warranties or guarantees have been negotiated.
3. Tires with less than 5/32nds (4mm) remaining tread depth.
4. Tire used under chains. MAXAM does recognize that in many applications tire chains provide enhanced tire protection and may extend tire life. In these cases, MAXAM may extend special negotiated warranties. Please consult your MAXAM representative for details.
5. Damage resulting from misuse, improper mounting, misapplication, use of non-approved rims, improper inflation, overloading, running flat, misalignment or imbalance of wheels/rims, defective brakes or shock absorbers, abuse, willful damage, oil, chemical action, fire or other externally generated heat, use of studs, water or other material entrapped inside the tire, vehicle damage or road hazards (such as rock cuts, punctures, cut separations, impacts, flex breaks).
6. Claims for irregular wear or rapid tread wear are not covered by this limited warranty.
7. Any tire which is operated above its Ton-Mile per Hour (TMPH) or Tonne-Kilometer per Hour (TKPH) rating.
8. Tires mounted with tubes or o-rings not approved by MAXAM.
9. Repaired or retreaded tires.
10. Any modifications to the tire (added buttress shoulders, re-grooving, re-lugging, etc.) void all warranties.
11. Any material added to the tire (tire fill, sealer, balancer, etc.) is not covered by this Limited Warranty and will not be compensated for in case of credit being issued for the tire.
12. Use of a solid type fill (such as urethane) voids all warranties.
13. Any costs associated with the repair of tires are not covered unless previously approved by MAXAM.
14. Costs of mounting and balancing following pro-rated replacement or repair of tires or tubes and applicable federal, state, provincial and local taxes, are not covered under this warranty.
15. Cost of disposal of warranted tires. Disposal of tires is the sole responsibility of the customer.
16. All other warranties, including the implied warranties of merchantability and fitness for a particular purpose are expressly disclaimed to the extent permitted by law.
17. ALL OBLIGATIONS OR LIABILITIES FOR INDIRECT, INCIDENTAL, PUNITIVE OR CONSEQUENTIAL DAMAGE ARE HEREBY EXCLUDED TO THE EXTENT PERMITTED BY LAW, INCLUDING ECONOMIC LOSS, LOSS OF PROFIT, LOSS OF USE OF VEHICLE, LOSS OF TIME, PERSONAL INJURY OR DEATH.

TO OBTAIN WARRANTY SERVICE

1. Contact an authorized MAXAM dealer or representative. Please be prepared to provide proof of purchase of the product, purchase date and serial number.
2. The authorized dealer or representative will contact MAXAM to arrange the inspection of the tire in question and processing of your claim. The dealer has no authority or responsibility to make the determination as to eligibility for coverage under this warranty.

V.1019



MAXAM TIRE NORTH AMERICA INC.

300 Rosewood Drive, Suite 102.
Danvers, MA 01923, USA
T:1-844-MAXAM-NA | F:978-560-0624

MAXAM INTERNATIONAL LIMITED

Grosser Hasenpfad 30
D-60598
Frankfurt am Main
Germany

MAXAMTIRE.COM

MC.1019